

# Vehicle data logger /data recorder LAUNCH C-RECORDER

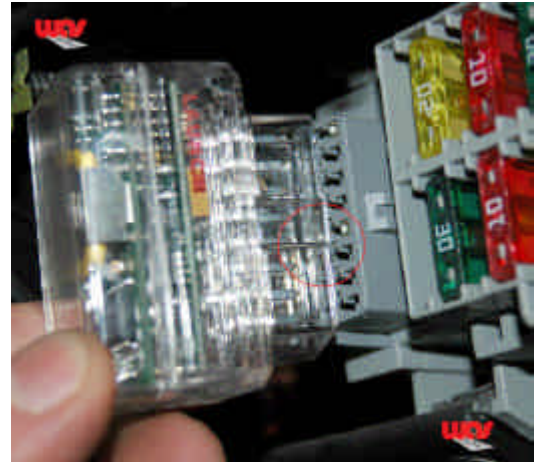
## Part-number: C-RECORDER

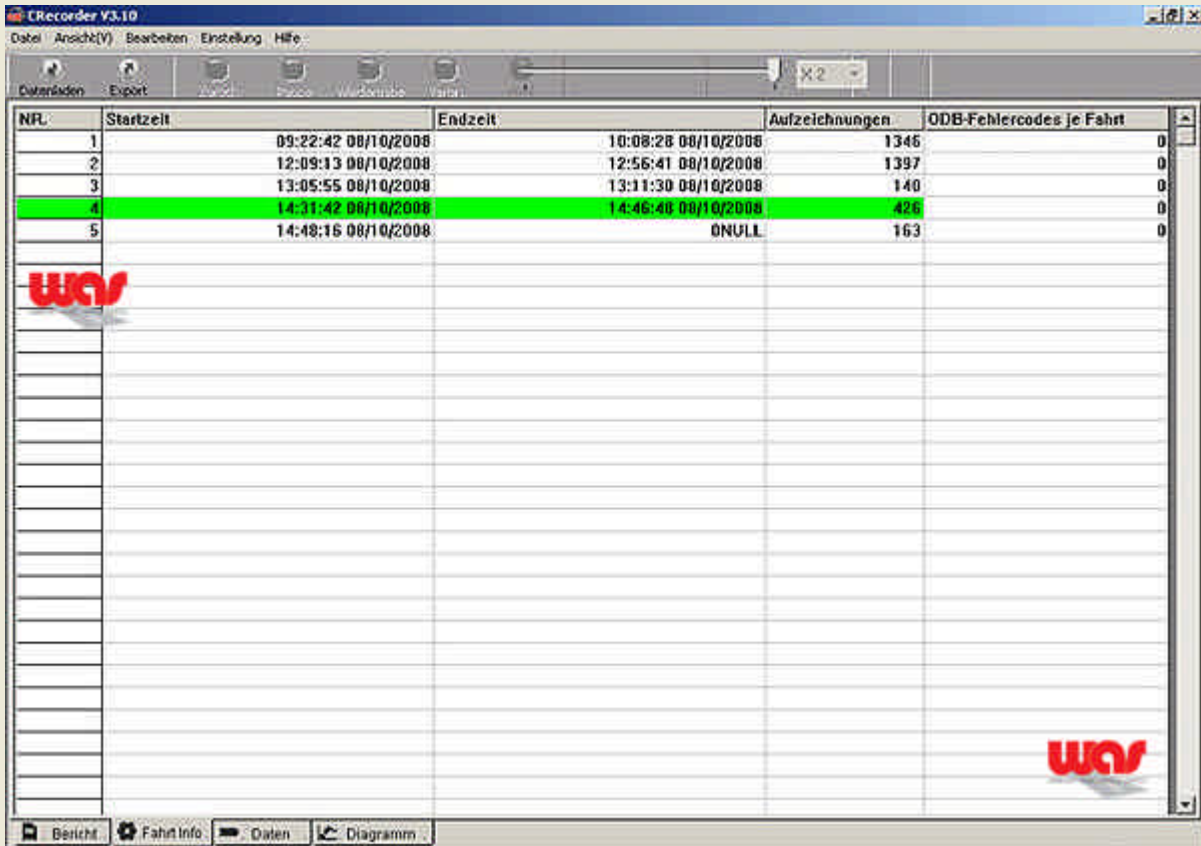
This mobile data recorder for vehicles (data logger) allows garages and workshops to record and save EOBD and OBD 2 DTC and live data streams on test drives. The recorded data files can be transferred on a PC via an USB cable and analysed for further diagnostics.

The LAUNCH C-Recorder is well suited for DTCs that occur while the vehicle is driving. The LAUNCH Data logger will be connected with the BD2 diagnostics interface and the customer is doing his normal drive routine until the error occurs again. The Live data streams and trouble codes will be saved and stored on the C-Recorder device. The garage can connect the C-Recorder with the PC and analyse the data in the workshop.

The LAUNCH C-Recorder can store several test drive files and record up to 24 hours continuously. Despite the relatively low price, the LAUNCH vehicle data logger is powerful and an important tool within every workshop. Comparable tools are sold from 1000 Euro upwards.

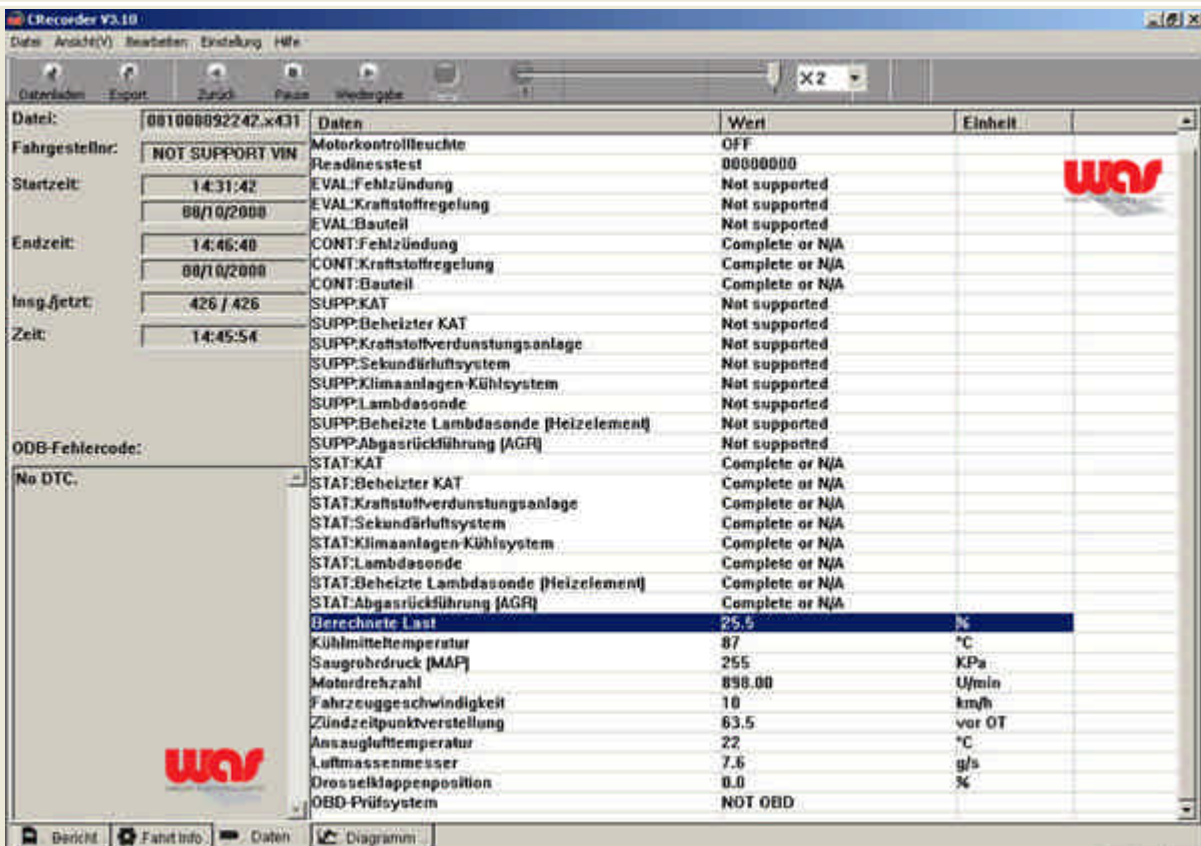
The CRecorder is compatible with all EOBD and OBD 2 vehicles with Diesel and Petrol engines. The C-Recorder has been awarded by the American Motor magazine as a top 20 tool in 2008





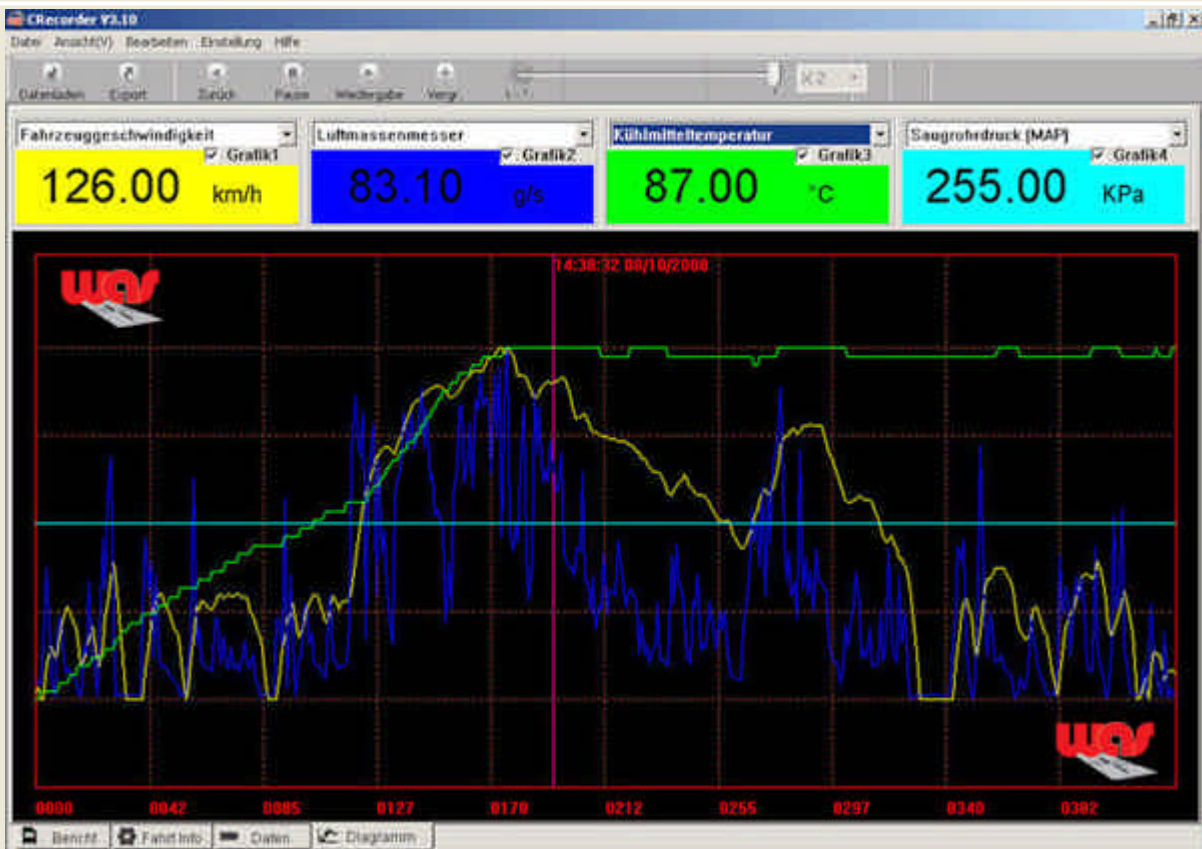
| Nr. | Startzeit           | Endzeit             | Aufzeichnungen | ODB-Fehlercodes je Fahrt |
|-----|---------------------|---------------------|----------------|--------------------------|
| 1   | 09:22:42 08/10/2008 | 10:08:28 08/10/2008 | 1346           | 0                        |
| 2   | 12:09:13 08/10/2008 | 12:56:41 08/10/2008 | 1397           | 0                        |
| 3   | 13:05:55 08/10/2008 | 13:11:30 08/10/2008 | 140            | 0                        |
| 4   | 14:31:42 08/10/2008 | 14:46:40 08/10/2008 | 426            | 0                        |
| 5   | 14:48:16 08/10/2008 | NULL                | 163            | 0                        |

1. Select the test drive you want to analyse from the C-Recorder.

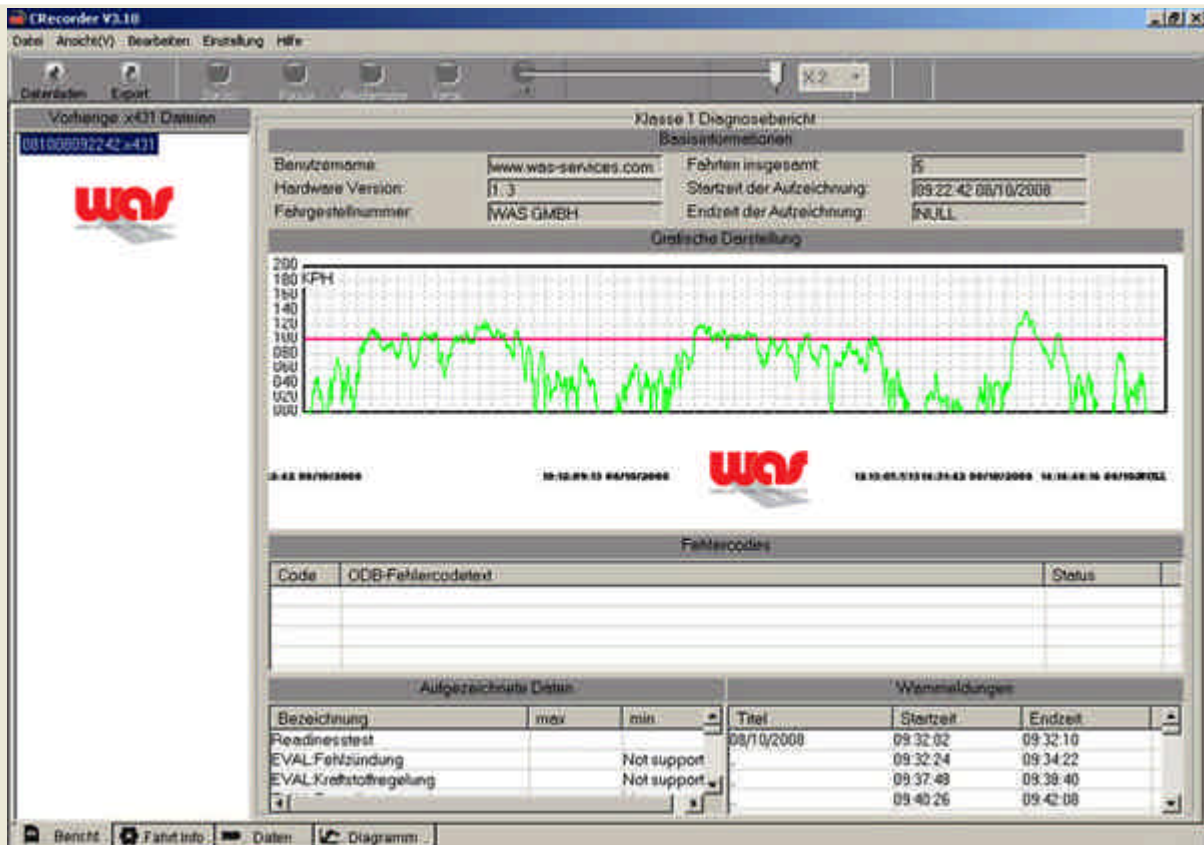


| Daten                                   | Wert            | Einheit |
|---|-----------------|---------|
| Motorkontrollleuchte                    | OFF             |         |
| Readinessstest                          | 00000000        |         |
| EVAL:Fehlzündung                        | Not supported   |         |
| EVAL:Kraftstoffregelung                 | Not supported   |         |
| EVAL:Bauteil                            | Not supported   |         |
| CONT:Fehlzündung                        | Complete or N/A |         |
| CONT:Kraftstoffregelung                 | Complete or N/A |         |
| CONT:Bauteil                            | Complete or N/A |         |
| SUPP:KAT                                | Not supported   |         |
| SUPP:Beheizter KAT                      | Not supported   |         |
| SUPP:Kraftstoffverdunstungsanlage       | Not supported   |         |
| SUPP:Sekundärluftsystem                 | Not supported   |         |
| SUPP:Klimaanlagen-Kühlsystem            | Not supported   |         |
| SUPP:Lambdasonde                        | Not supported   |         |
| SUPP:Beheizte Lambdasonde (Heizelement) | Not supported   |         |
| SUPP:Abgasrückführung (AGR)             | Not supported   |         |
| STAT:KAT                                | Complete or N/A |         |
| STAT:Beheizter KAT                      | Complete or N/A |         |
| STAT:Kraftstoffverdunstungsanlage       | Complete or N/A |         |
| STAT:Sekundärluftsystem                 | Complete or N/A |         |
| STAT:Klimaanlagen-Kühlsystem            | Complete or N/A |         |
| STAT:Lambdasonde                        | Complete or N/A |         |
| STAT:Beheizte Lambdasonde (Heizelement) | Complete or N/A |         |
| STAT:Abgasrückführung (AGR)             | Complete or N/A |         |
| Berechnete Last                         | 25,5            | %       |
| Kühlmitteltemperatur                    | 87              | °C      |
| Saugrohrdruck (MAP)                     | 255             | KPa     |
| Motordrehzahl                           | 898.00          | U/min   |
| Fahrzeuggeschwindigkeit                 | 10              | km/h    |
| Zündzeitpunktverstellung                | 63.5            | vor OT  |
| Ansauglufttemperatur                    | 22              | °C      |
| Luftmassenmesser                        | 7.5             | g/s     |
| Drosselklappenposition                  | 0.0             | %       |
| OBD-Prüfsystem                          | NOT OBD         |         |

2. Live data streams, trouble codes can be viewed as data lists. The view can be zoomed to run through long data lists more quickly. All live data parameters, that are saved by the OBD protocol can be viewed and selected for a graphical analysis. When an error code will be set you can see it directly related to the relevant data block.



3. The workshop can configure individual data lists up to 4 different parameters. The graphical view also supports the ZOOM mode to run through the list more quickly.



4. The workshop can also combine data lists with the graphical view.

### Technical data LAUNCH CRECORDER

Supported protocols:

- OBDII: ISO9141; SAE J1850VPW; SAE PWM
- EOBD: ISO 14230KPW
- CANBUS: ISO15765

Connector: OBDII / OBD CAN (16-pin)

User friendly software, very intuitive to use.

Connect with a free USB port of the Laptop / PC

Read, save and store vehicle data up to 24 hours

Dimensions: 50 x 28 x 40 mm

**\*Legal note:**

\* Manufacturer names, model names and product names are protected trademarks of their respective owners. The names are only used for description purposes and to identify the appropriate matching product