

# CARSOFT ULTIMATE PRO diagnostics tool For Mercedes-Benz, BMW, Sprinter, MINI \*

**Part-number: CS ULTIMATE PRO**

The CARSOFT Ultimate Pro 2.0 vehicle diagnostics software is a highly professional diagnostics solution for garages and workshops, that work a lot with BMW, Mercedes-Benz, Sprinter and Mini vehicles\*. Compared with many other diagnostics systems it offers much more than a standard scanner.

It comes with a comprehensive workshop information system that goes far beyond reading codes and data. It is equipped with detailed fault code information, repair tips and fault explanations.

More than 500 wiring diagrams are included. The CARSOFT Ultimate PRO system is also able to re-programme ECU's, do active vehicle tests and synchronization of the engine ECU with the immobilizer system.



## **Intuitive to use and high quality diagnostics terminology:**

The Carsoft software is very intuitive to use and uses original OEM trouble code descriptions and manufacturer terminology to describe codes, procedures and components. No initial training is required to operate the complete diagnostics procedures and get into the relevant repair information or use the wiring diagrams. It will be delivered including 2 years free of charge software updates and comes with 24 months full warranty.

## **Diagnostics features of CARSOFT Ultimate PRO Version 2.0 \*\***

- Trouble Code Diagnosis using exact and full OEM code descriptions & information along all models
- ECU information including hardware version, software version and ECU part numbers
- Diagnose diesel and gasoline engines from 1996 onwards
- Display live engine data streams
- Basic settings: Fuel trim
- EWS immobilizer alignment with engine ECU
- Running smooth tests
- CALIBRATION, Coding and Adaptations
- Component Information & Explanations
- Reset of shifting adaptation on automatic transmission from 1996 onwards
- Display live transmission data
- Diagnose brake and traction control systems from 1991 onwards (ABS, DSC, ASC)
- Diagnose airbag modules and safety gateway (1988 onwards)
- Immobilizer synchronization with engine
- Instrument cluster (trouble codes, switch language settings)
- Diagnose air conditioning / climate control
- Diagnose on-board computer
- Diagnose rain sensor, light modules and park distance control
- Component activation on Central Electronics (Activate wipers, door locks, windows)
- I-Drive Programming instructions
- CAS Car Access System Under Voltage Reset
- Service Interval Reset and Management Systems
- Reset of Under Voltage & Low Voltage Faults on Car Access System (CAS)\*

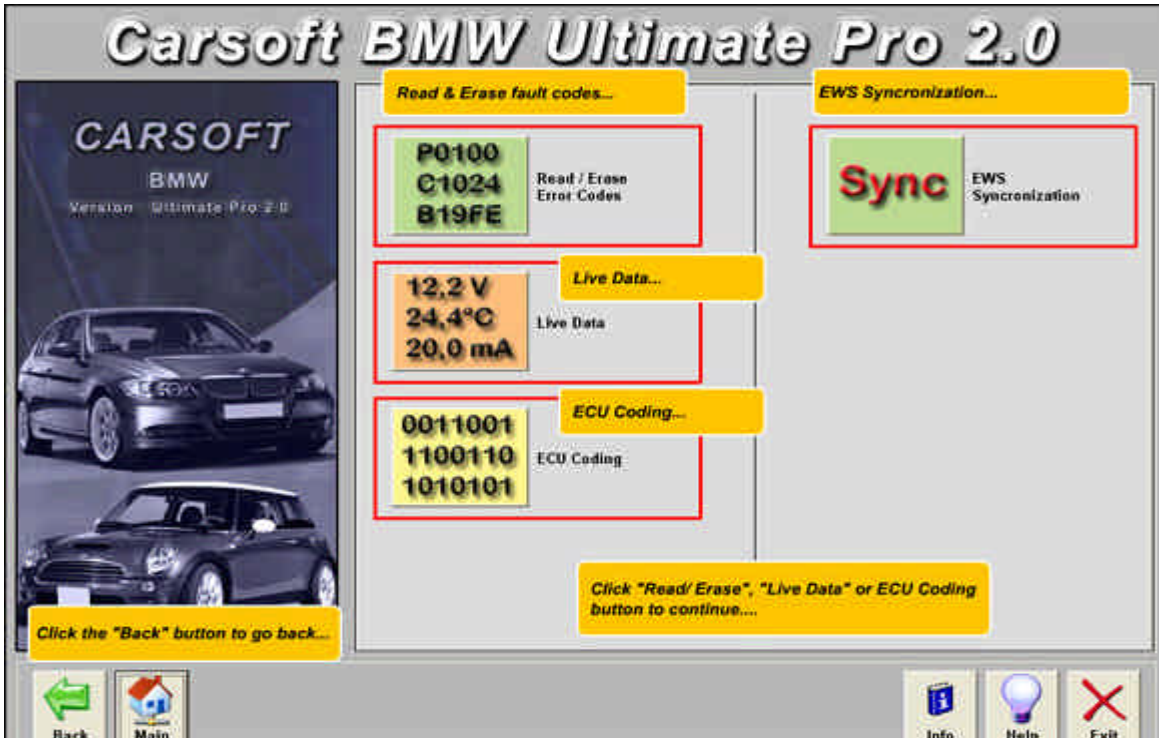
**\*\* Individual and specific diagnostics features are always depending on the individual model-type, the**

manufacturing date and the vehicle configuration.

Screenshots of CARSOFT Diagnostics software:



1. After you have selected the model you can choose the system you would like to diagnose! This graphic shows the available systems within the vehicle BODY section.

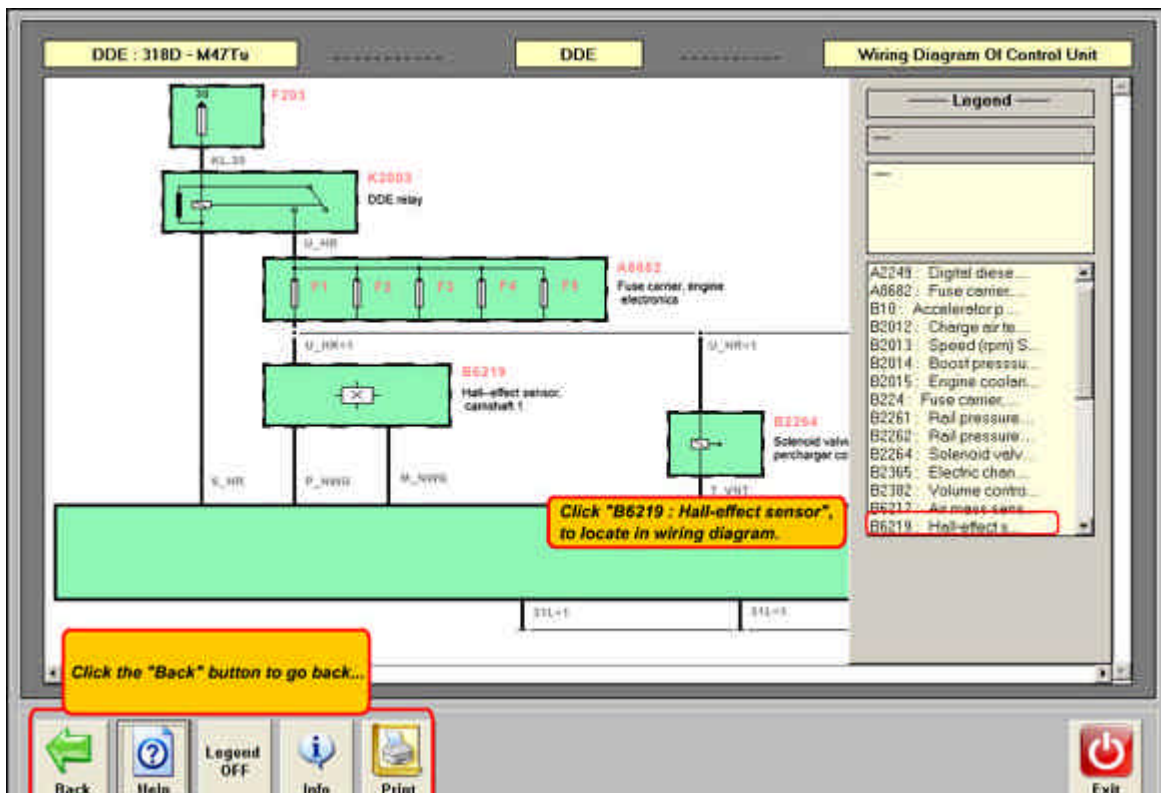


2. On the picture you will see the diagnostics procedures you can select. Read and Erase the stored fault codes, display relevant LIVE data streams, DO an ECU coding, when you need to change the ECU or even synchronize the immobilizer system with the engine.

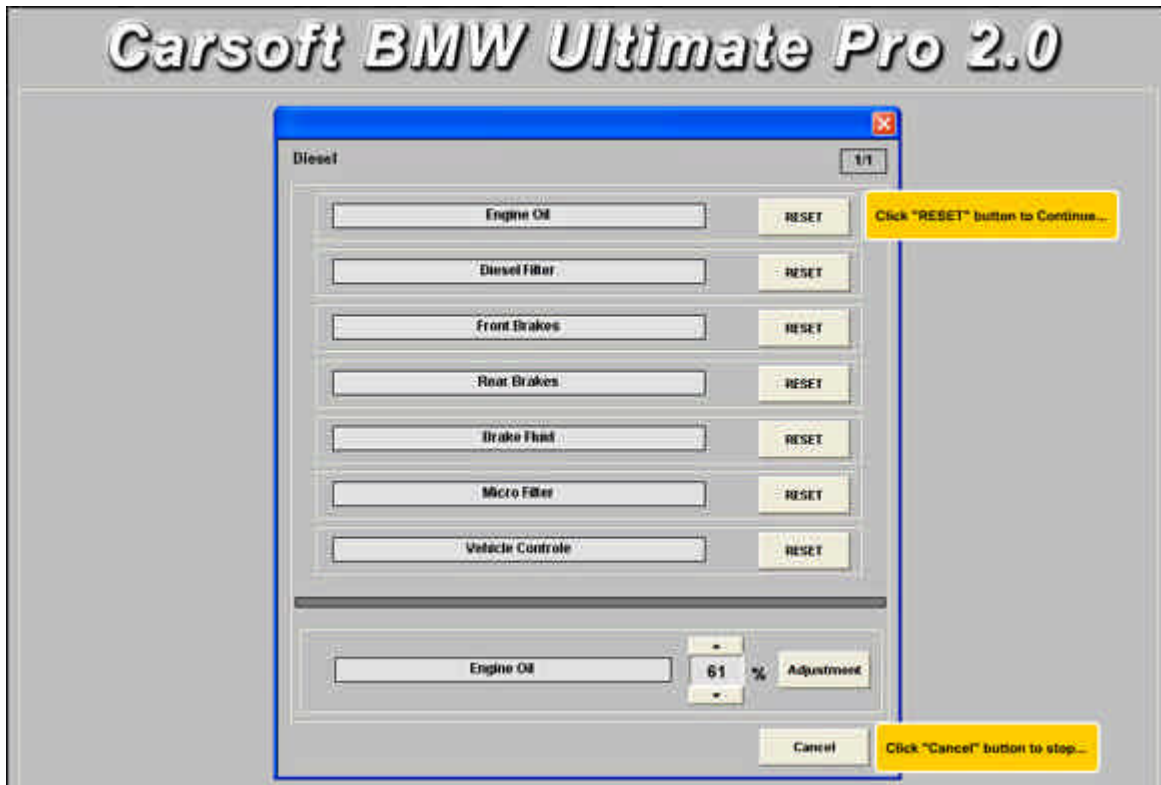
Individual and specific diagnostics features are always depending on the individual model-type, the manufacturing date and the vehicle configuration.



3. On the graphic you see an airbag trouble code with the original code number and the manufacturer trouble code description. Beside the fault codes all relevant information is shown such as ECU data, ECU supplier and the coding index.



4. A direct link guides you into the CARSOFT Information system, where you get wiring diagrams, information about the component location and step-by-step repair information.



5. This example shows different service options within the instrument cluster. You cannot only reset the engine oil service but also intervals for the Micro filter, Brake fluid, brake pads.

**Specific Mercedes-Benz systems that are supported\*:**

**ENGINE:**

IFI - Diesel Engine Control Unit / DFI - Diesel Engine Management / CDI - Diesel Engine Management / PMS - Petrol Engine Management / HFM - Petrol Engine Management / LH - Petrol Engine Management / ME - Petrol Engine Management / MSM - Petrol Engine Management

**TRANSMISSION and BRAKE Systems:**

EGS - Electronic Transmission Control / ESM - Electronic Selector Control Unit / ABS - ABS Control Unit / ESP - Traction Control / ABR - Adaptive Brake System / BAS - Brake Assistant Module / SBC - Sensitive Brake Control Unit

**BODY CONTROL UNITS:**

AM - All Activity Module / AB - Airbag / ABC - Active Body Control / AHE - Trailer Recognition Module / AirMatic - Airmatic System / ATA - Anti Theft Alarm Control Unit / BSG - Battery Control Module / CGW - Central Gateway Module / DAS - Drive Authorisation System / DCM - Door Control Module / DM - Diagnostic Module / EAM - Enhanced Activity Module / EIS - Electronic Ignition System / ESA - Electronic Seat Adjustment / HRA - Headlight Range Adjustment / KG - Keyless Go / LCP - Lower Control Panel / LWR - Headlight Range Adjustment / LWR - Headlight Range Adjustment / OCP - Overhead Control Panel / PSE - Pneumatic Control System / PTS - Parktronic System / RST - Roadster Soft Top REVGUS - Reversible emergency tensioning retractor / SAM - Signal Acquisition Module / SIH - Seat Heating / UCP - Upper Control Panel / UVS - Rollover Bar / Vario Roof Module / VD - Vario Roof / WSP - Electronic Drive Away Protection / XALWA FL - Headlight Range Adjustment

**AUDIO, NAVIGATION, TELEMATIC and Airco systems:**

AGW - Audio Gateway / CD - CD System / COMMAND - Command System / CTEL - Telephone / D2B - D2B System / IC - Instrument Cluster / NAVI - Navigation System / SCM - Steering Column Module / SYSTEM - System Module / AIRCO

Manufacturer names, system names and product names are protected trademarks of their respective owners.

**Delivered items of Carsoft Ultimate Home version for BMW\*:**

- Diagnostics software
- Security Dongle
- Fully illustrated user manual
- Modular interface cable box (multiplexer) USB
- 16-pin OBD2 Adapter
- 20-pin adapter for older BMW vehicles
- USB Cable
- 38-pin Adapter

It will be delivered including 2 years free of charge software updates and comes with 24 months full warranty.

This is an ORIGINAL product from Carsoft! It is not a Chinese copy or with a faked diagnostics interface!

**Available language versions and system requirements:**

The software will run on PC or Laptop with Windows 2000, Windows XP or Vista operating system. The item comes with 24-months full warranty and including free service packs.

Language support: English, Other languages version will follow within the next 2-4 months. Additional language support is covered within updates.

**DO NOT INSTALL ANY HARDWARE COMPONENTS (USB SECURITY DONGLE) UNTIL THE CARSOFT ®™ SOFTWARE INSTALLATION HAS BEEN COMPLETED!**

**\*Legal note:**

\* Manufacturer names, model names and product names are protected trademarks of their respective owners. The names are only used for description purposes and to identify the appropriate matching product